

Stay-Linked™
Application Mobility. Host Reliability.

Thin-Client
Terminal Emulation

5250/3270
VT100/220
SSHv2

Terminal
Session Management

Try it
FREE for
30 Days!



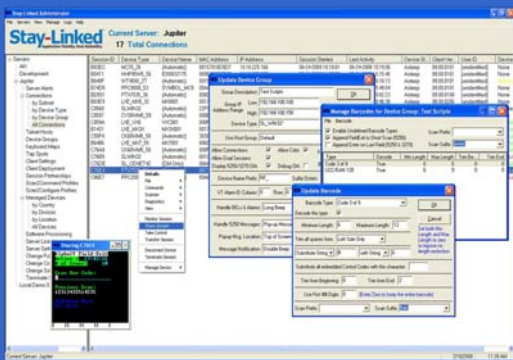
The shift to **thin** is on.

Sessions run on the **host**, not on the user's device.

Better Performance: End-users consistently report that devices running Stay-Linked thin-client software to connect to their host systems experience much "snappier" scan and screen response, even over a low-bandwidth, wide-area wireless connection (e.g. cellular, 1X, etc.).

Better Reliability: Stay-Linked Telnet/SSH Client sessions run on the same host system as the Telnet/SSH Server process and not on the user's device – no dropped host sessions, no gateway PC devices, and no complicated re-connect logic/proxy processes to deal with.

Better Security: Every keystroke and scan is encrypted as a "micro-packet" using Stay-Linked's unique Client2Host™ protocol that also keeps all Telnet/SSH communication local to the host system where it is naturally secure and not distributed over the network where it can be hacked.



Stay-Linked Administrator
GUI Console

Included
in the
solution!

Centralized Session Management:

Help Desk staff can monitor, share, transfer and manage Stay-Linked user sessions in real-time – even if the user's device is out-of-range, experiencing network issues or completely disabled.

Centralized Configuration:

Terminal emulation configuration settings are maintained and applied on the host system. No need to push configuration files to each device.

Device Independence:

Stay-Linked thin-client software runs on all popular mobile computing devices from **Motorola/Symbol, Intermec, LXE, Psion Teklogix, Datalogic/PSC, AML, Honeywell/HHP** and others.

For more details, contact us, or your Stay-Linked Certified Partner reseller.

Stay-Linked Corporation

15991 Red Hill Avenue
Suite 210

Tustin, CA 92780 USA

P 714.918.7700

F 714.918.7727

www.Stay-Linked.com